

## Charts Indicating Bed Numbers by Care Home Type

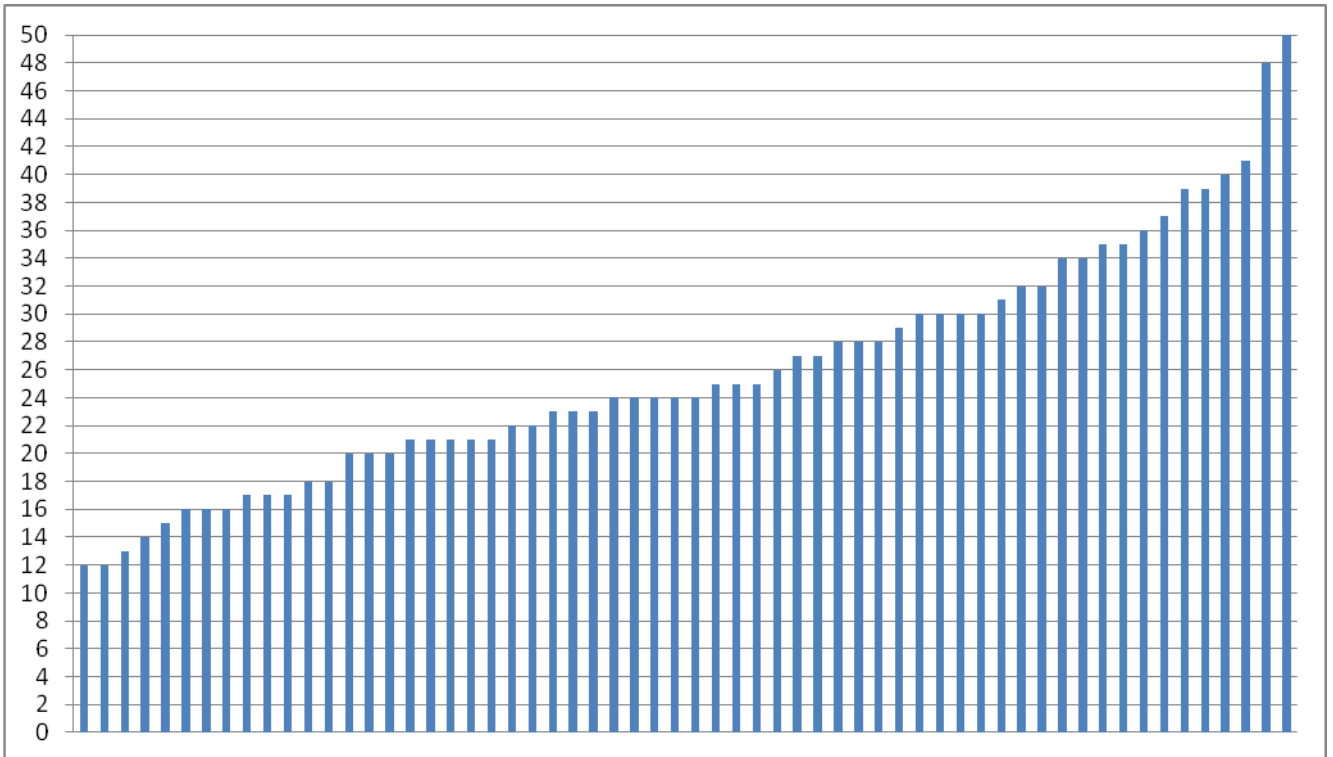


Figure 2: Number of Beds per Residential Home  
(Older People = 59 Homes)

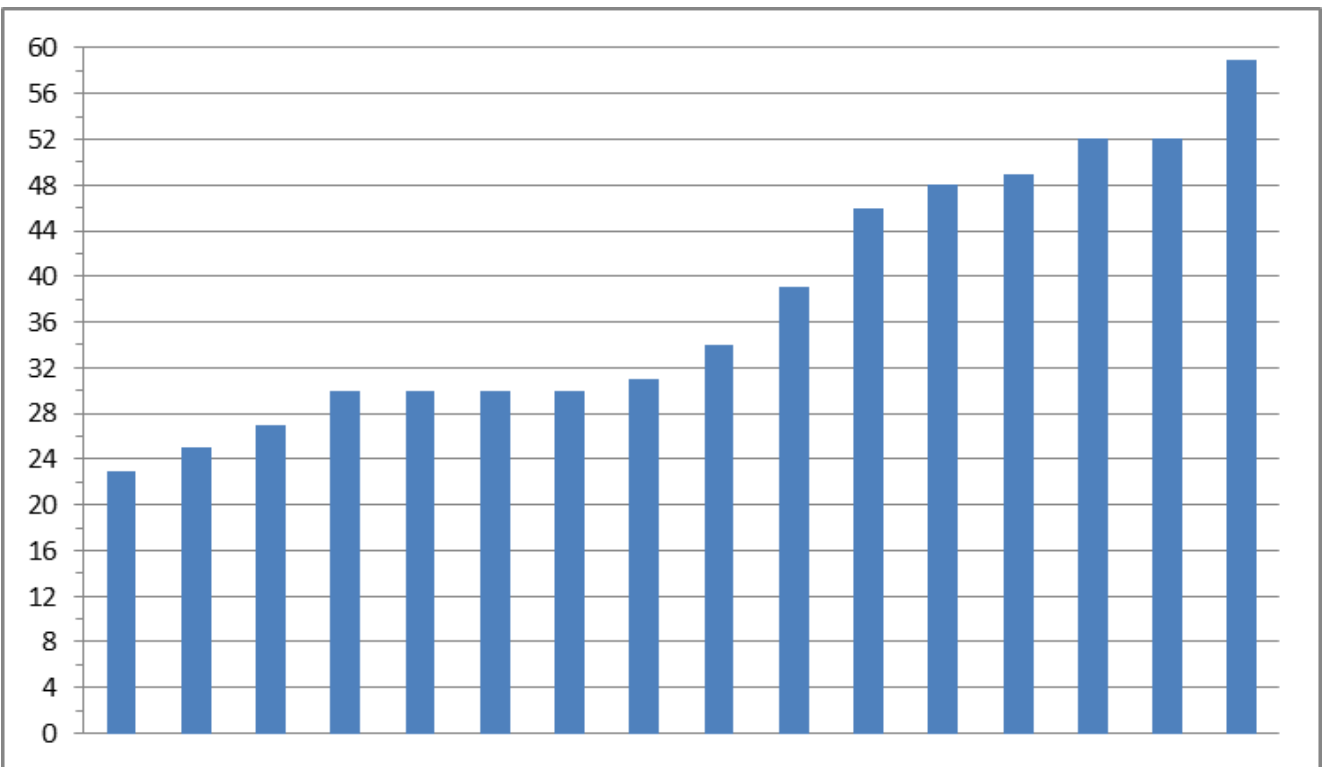


Figure 3: Number of Beds per Nursing Home  
(Older People = 16 Homes)

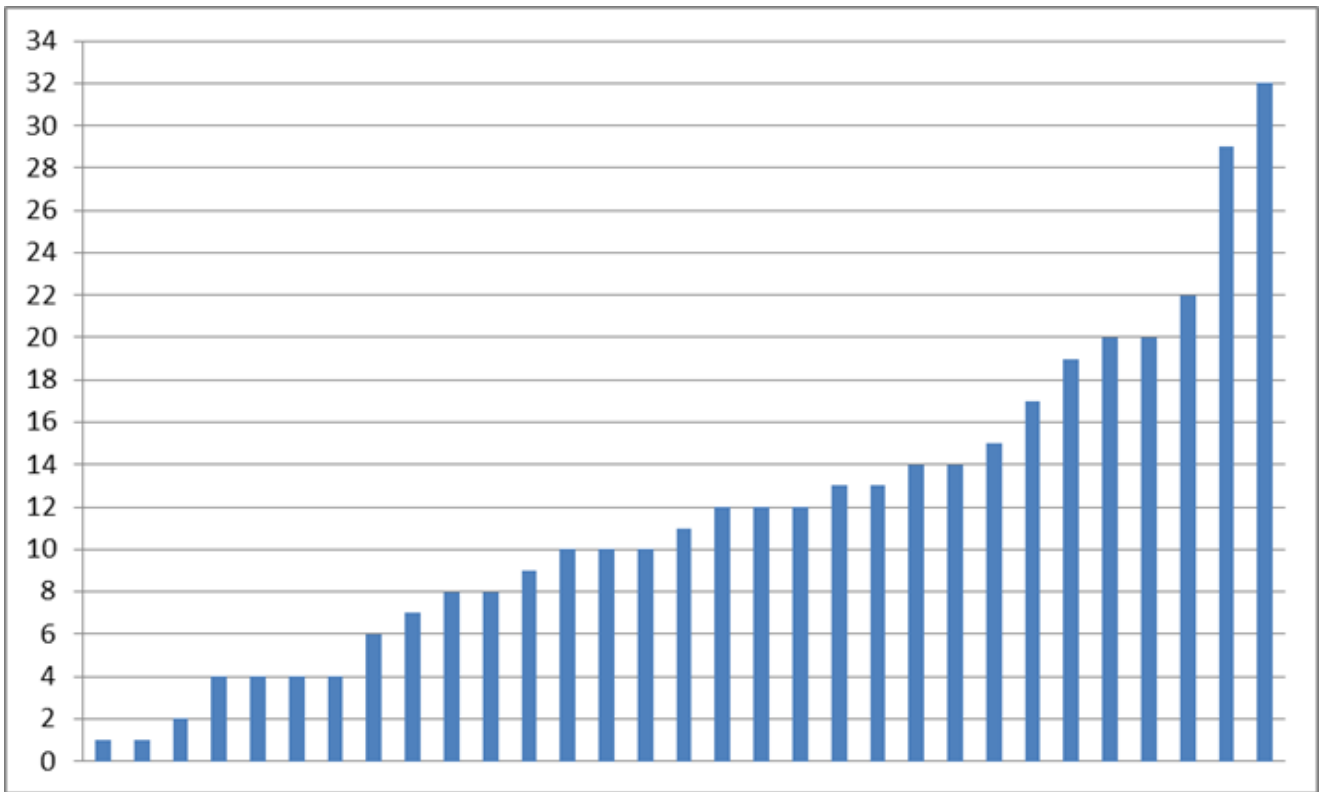


Figure 4: **Number of Beds per Residential Home**  
*(People Aged 18 to 65 = 33 Homes)*